

# HEDDLE CORPORATE OVERVIEW



The MV Cuyahoga being dry docked at Heddle's Port Weller Dry Docks facility on New Years Eve Day 2017



# SAFETY MOMENT

- At Heddle, people are our most important asset and safety is part of our culture.
- Working smartly in confined spaces such as tanks, vessels, and more, is crucial to working safely. That starts with identifying the space and putting warning signs on it. Some confined spaces require a permit to enter, and before doing so individuals must be properly trained and provided with personal protection equipment.
- Plans should also be in place for rescue team availability and the atmosphere in a confined space must be tested before entry is permitted. To stay safe in confined spaces, be sure you've done all you should to know before you go.

# OUR STORY



- Founded in 1987 in Hamilton, Ontario
- Currently ~200 full-time employees in Ontario and Atlantic Canada
- In 2012, Heddle began to expand into locations outside of Hamilton:
  - 2012 - East Coast (mobile workforce)
  - 2016 - Thunder Bay
  - 2017 - Port Weller

# WHAT WE DO

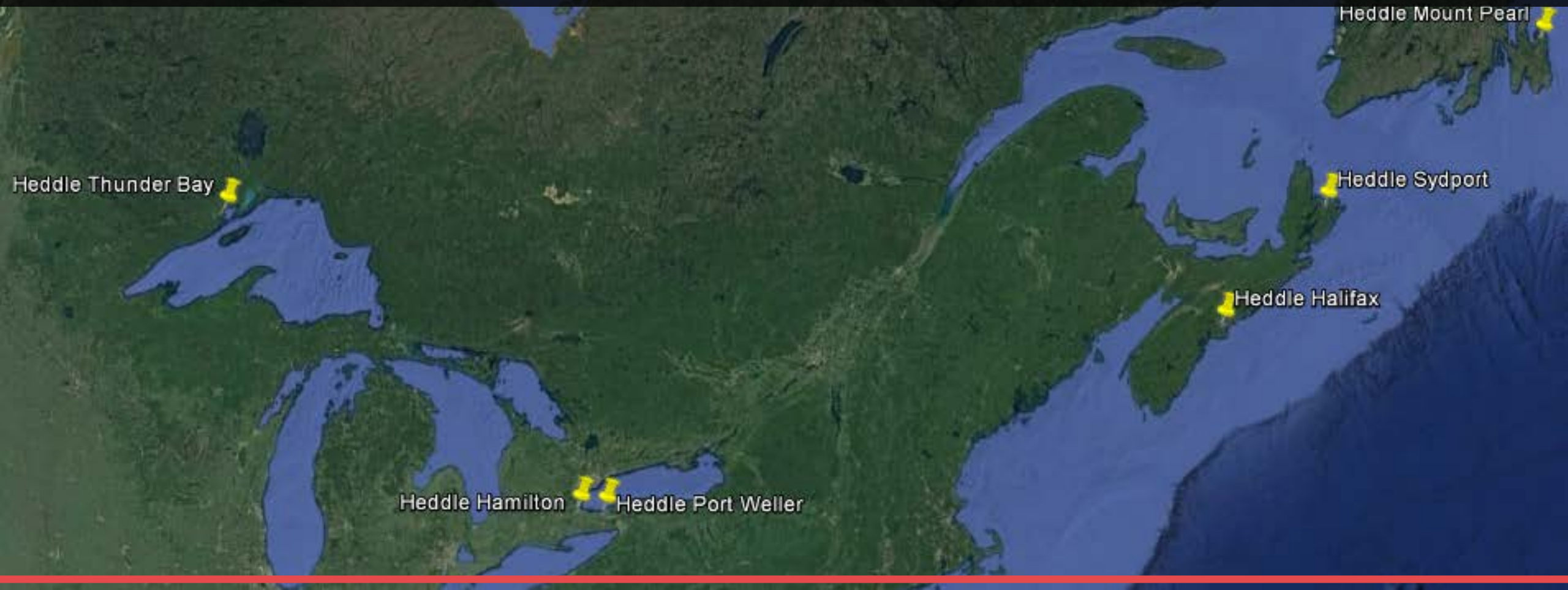
## Products

- Vessel Repair, Maintenance and Overhaul (welding, mechanical, electrical, hydraulic, blast/paint/coating)
- Engineering
- Vessel Recycling
- Fabrication & Machining
- Project Support
- Misc.

## Our Clients

- Commercial shipping companies
- Government of Canada (Coast Guard, ferries, infrastructure)
- Oil and gas operators
- EPCIs

# OUR WORLD



# WHO WE ARE

## HAMILTON

- 60 full-time employees ramping up to 120 people during peak periods

## PORT WELLER

- 25 full-time employees and 150 employees expected during peak periods

## THUNDER BAY

- 25 full-time employees and 80 expected at peak periods

## NOVA SCOTIA AND NEWFOUNDLAND & LABRADOR

- 60 full-time employees and 125 expected during peak periods

# OUR COMMUNITIES



# PORT WELLER, ONTARIO

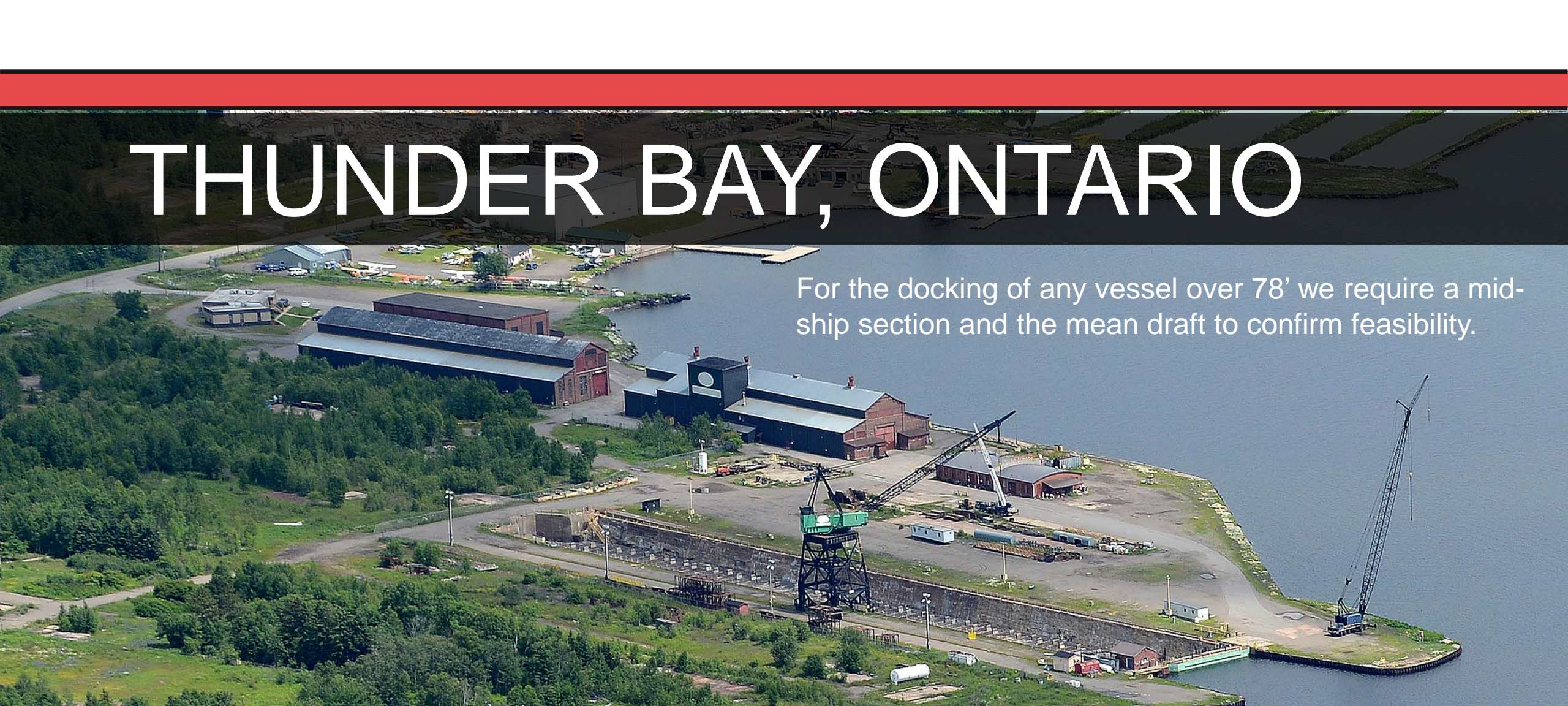


NAME	LENGTH	WIDTH	DEPTH
PW GRAVING DOCK 1 (Deep Dock)	228.60m (750')	20.73m (68')	9.14m (30.0')
PW GRAVING DOCK 2 (Shallow Dock)	243.84m (800')	28.35m (93')	4.35m (14.3')



# THUNDER BAY, ONTARIO

For the docking of any vessel over 78' we require a mid-ship section and the mean draft to confirm feasibility.



NAME	LENGTH	WIDTH	DEPTH OVER SILL
TB GRAVING DOCK	227.4m (746.1')	23.89m (78.4')*	5m (16')*

# HAMILTON, ONTARIO



NAME	LENGTH	WIDTH	DEPTH OVER SILL	CAPACITY
HMD 1	76.20m (250')	20.73m (68')	5.5m (18')	3,000t
HMD 2	99.10m (325')	28.35m (93')	7.0m (23')	6,000t
HMD 1 & 2	198.1m (650')	20.73m (68')	5.5m (18')	9,000t
HMD 3	43.30m (142')	19.51m (64')	5.5m (18')	1,000t

# SYDNEY, NOVA SCOTIA



The HMCS Preserver and Princess of Acadia berthed at Sydport for recycling works

# HALIFAX, NOVA SCOTIA



The Canadianization of the M/V Fundy Rose executed in Halifax, Nova Scotia

# MOUNT PEARL, NFLD

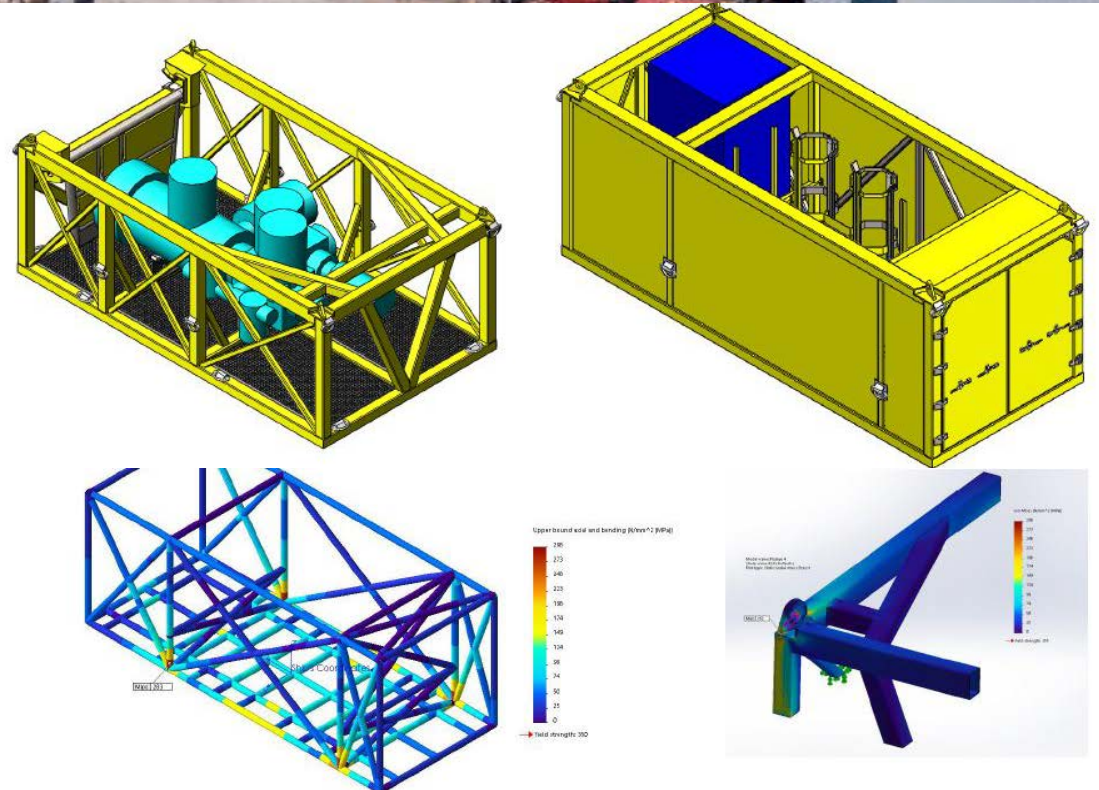


Heddle crews working on the Maersk Nexus. The scope included the installation of a 50t crane and stern roller

# ENGINEERING

## CONCEPT AND DETAILED DESIGNS

- Ballast calculations/docking plans
- Blocking plans
- 3D Modeling
- Strength Analysis
- Fabrication and installation drawings
- As-built drawings
- Technical reports and procedures



Screenshots of 3D models and strength analysis calculations performed by Heddle

# DRY DOCKING RMO



The M/V Mississagi being dry docked in the the HM1 and HM2

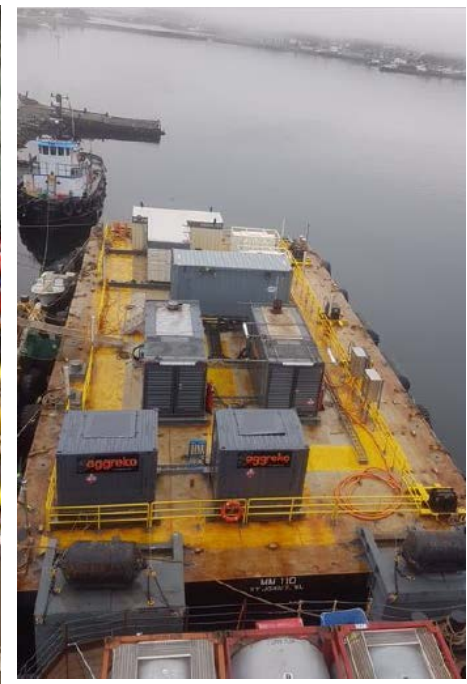
# ALONGSIDE RMO



The CCGS Louis S. St. Laurent undergoing alongside repair work by a mobile Heddle repair team



# FABRICATION



A sample of products that Heddle has designed, fabricated and delivered in 2016-2017

# VESSEL RECYCLING



An Oberon Class Submarine transported by Heddle from Halifax, NS to Port Maitland, ON for recycling.

# PROJECT SUPPORT



Heddle's Broad Cove, NL facility servicing Exxon's Hebron Project

# QUESTIONS

